

Smart Store Platform Support:

Admin Temperature Configuration

Temperature system inside the Coolers/Freezers

Cantaloupe Smart Stores are all equipped with temperature sensors in the top part of the cooled area. These sensors are highly integrated in the kiosk software to comply with Health and Food regulations. Since the regulations may differ between countries the software is configurable on how to act on temperature changes (See Configuration Settings).

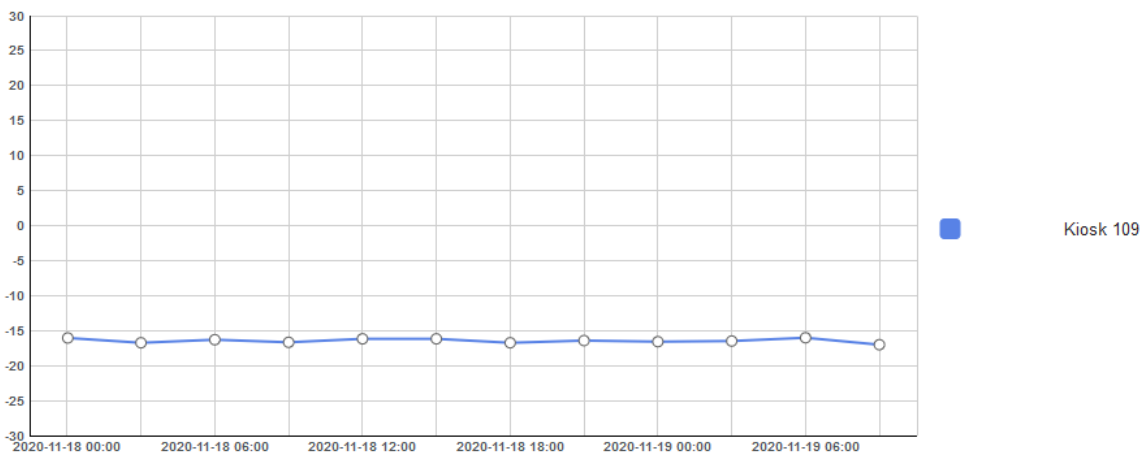
Functions	600	700	850
Model:			
Auto-locking if temperature is outside of allowed temperature range for a specified duration	X	X	X
Remote locking/unlocking of coolers	X	X	X
For DUOs and Lounge models, only cooler affected by bad temperature will auto-lock	X	X	X
Disable Auto-locking even if temperature go down if frequency (two times) or duration (Bad temperature for more than 1 hours) is met.		X	X
Monitor readings and view historical graphs of the temperature in back office (see image 1 below)	X	X	X
Configure Cooler/Freezer temperature remotely		X	X
Auto-locking because of bad temperature can be configured to send email alert	X	X	X
Ability to configure open hours for kiosks. If time and day is outside of an open interval, the kiosk will auto-lock.	X	X	X
Ability to specify auto-locking schedules per product. Example: If kiosk has fresh salad in stock after 9PM a Tuesday, auto-lock the cooler(s) that contains that product.	X	X	X

Temperature Validation

Kiosk ID:

From:

To:



Configuration Settings

BadTemperatureDuration

Default value -1

The number is in minutes. And after that minute duration has elapsed with bad temperature inside it will lock the cooler down. A value of -1 mean it is disabled.

TemperatureAlarmDiff

Default value 5.0

How many degrees a cooler can diff before triggering alarm

TemperatureValue

Target value, should be set to the same temperature as the coolers.

Temperature Notifications

When a kiosk is triggered with a bad temperature, an email will be sent to all addresses specified in the server setting: Service.AlertMailTo and kiosk setting MailTo.Alert

The kiosk will also be set to maintenance mode so that it will show up as such in the Dashboard in webadmin.

These settings can be configured on edit kiosk, got to Admin: *Network->Information->Kiosk* and then search for the specific kiosk in question. Click on the kiosk ID and then go to the tab called "Temperature Settings", see image below.

If the settings should be set for entire network you can also set default values on the kiosk settings in admin, then go to: *Network->Settings->Kiosk Setting* and search for the above settings.

← Edit kiosk, ID: 342 View Location Restart

Edit QR Code Temperature Settings Open Hours

IQbox Level Settings: (edit settings directly in table below)

Position	Name	IQ ID	Desired temperature	Alert on temp diff of	Alert on sensor offline
1		-641936129	4	5	false
2		-799886679	4	5	false

Kiosk Level settings: (edit settings directly in table below)

Setting	Text value	Description
BadTemperatureDuration	20	Time in minutes that temperature needs to be outside of accepted range before taking action
KioskLockingEnabled	True	Whether temperature alarms is allowed to lock coolers or not.
ShowTemperatureInFooter	True	Whether to show temperature instead of clock in footer
TemperatureControl	iqbox	DEFINED AT KIOSKI Method of temperature reading

Save Settings

